

DIGITAL SHOWER MIXER INTELLIGENT SHOWER CONTROL SYSTEM FOR BATHROOM INSTALLTION INSTRUCTIONS



BEFORE YOU BEGIN

Before installing, read entire Installation Instructions. Observe all local building and safety codes.

For the following installation instructions for your new product it is assumed that any old fixtures have been removed and any repairs or modifications to the water supply have been completed. Unpack and inspect the product for any shipping damages. If you find damages, do not install.

Contact Customer Service at 703-378-1915. If you need assistance or have questions while installing your product, contact Customer Service.

We recommend consulting a professional if you are unfamiliar with installing bathroom fixtures.

TOOLS REQUIRED*



Plumber's Tape



Basin Wrench



Thread Sealant



Screwdriver



Adjustable Wrench



Hex Wrench

*not included

Features

Touch panel: with a touch control panel, easy to use.

Digital thermostat: keeps the output water TEMPERATURE stable, the TEMPERATURE accuracy of ± 1 degrees Celsius.

Protection Against Overheating: when the cold water cut off and bring the water TEMPERATURE exceeds 49 degrees centigrade, the system will stop the water outlet in 2 seconds to protect the user from hot water.

Water TEMPERATURE Setting: you can adjust the water TEMPERATURE however you want.

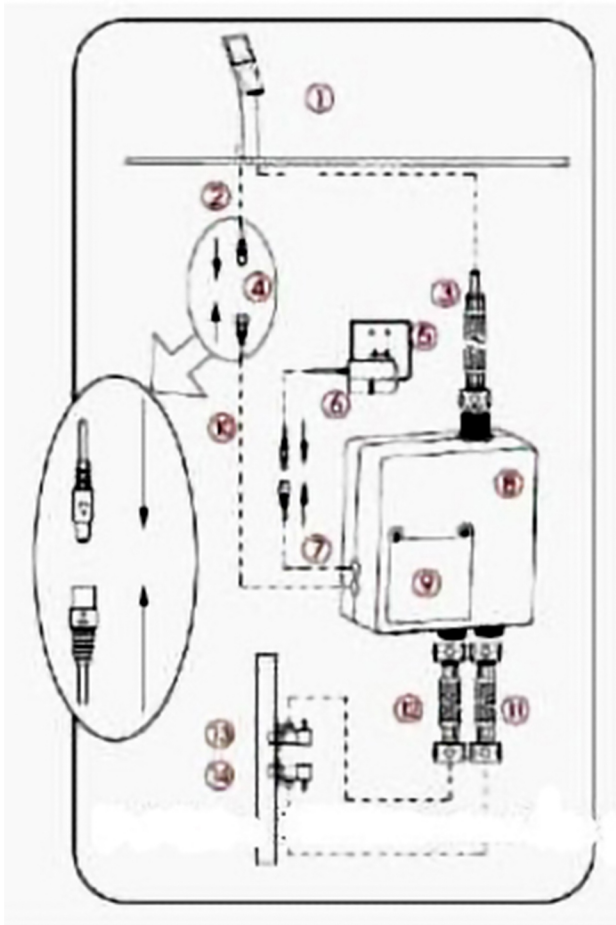
Water Saving: you can adjust the water flow as you want, default working time is 18 minutes, the system will turn off as soon as time runs out.

Prevent Water Backflow: the hot and cold water inlets adopt the special design, which can effectively prevent the backflow of water when the water pressure difference hot and cold.

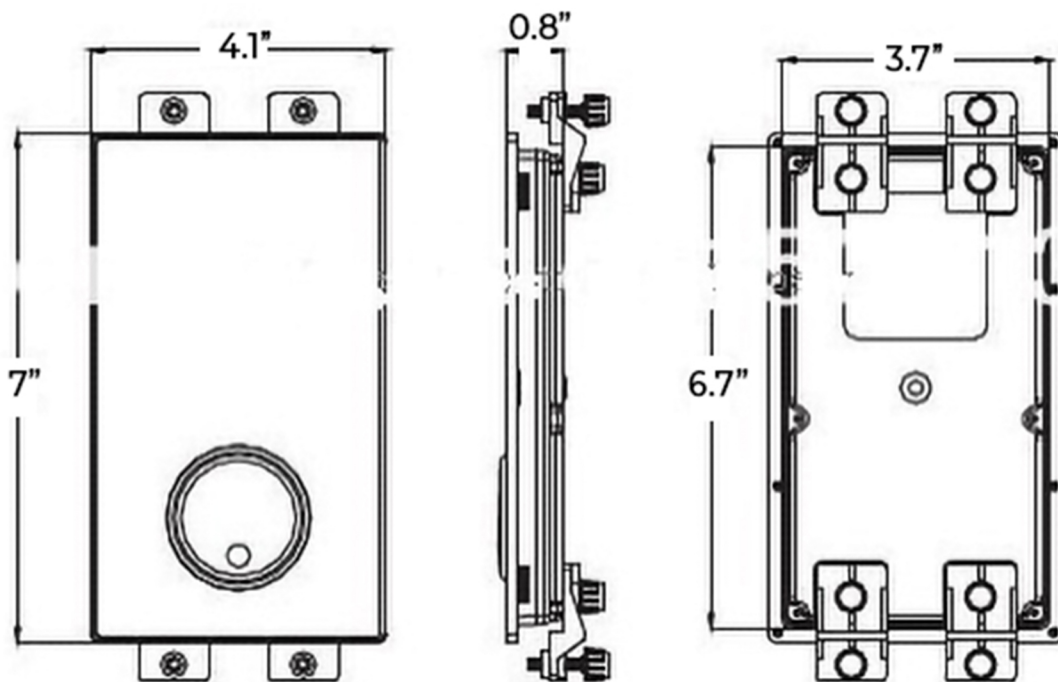
Cold, hot water pressure difference: our system can accept Max. 6: 1 difference in water pressure.

Dual power supply, more safety and reliable: the voltage of our product is 12V. We offer an external adapter, which can transfer 100-240V to 12V power supply. when local power cuts, the system still works by battery host box.

Easy Installation: wall mounted wall mount supplied by us.



1. Faucet or shower
2. Control cable of faucet
3. Thermostatic water outlet pipe
4. Control cable plug
5. AC 220V plug seat
6. Power adapter
7. Power supply cable of the host box.
8. Host box
9. Battery cover
10. Control cable of the host box
11. Hot water inlet
12. Cold water inlet
13. Cold water supply
14. The water storage heater / Solar type water heater / centralised heating system





Real-time temperature display

No deception



Intelligent constant temperature

Safe & Comfortable



Intelligent memory temperature

It works when turn on water



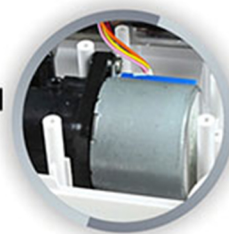
Patent Design

Safe and secure



Precise in temperature control

Prolong the life time of the hot water



Non Clogging

Body's life over 10 years



Operation



- | | |
|----------------------|---------------|
| ❶ Fly-shuttle switch | ❸ Setting |
| ❷ Power on/off | ❹ LCD Display |

Notice

1. The control panel is sensitive, when install it, please avoid to let it face directly to the water from hand shower and the head shower, because water will get it mis-operation or lock the control panel.
2. The touch button is the best sensitive area.
3. The touch panel has water splash protection technology. When system detect mis-operation, no response and need about 1 second to recover.


Function

1. Water TEMP adjust 2. Hand shower 3. Head Shower 4. Water flow adjust


Operation

1. Power on/off

Power on

After electrify, you can touch  to make the system ON. When you hear buzzer sound, the fly-shuttle switch and the LCD panel would be lighting. Water TEMP and water flow will be same as that you set last time. The cursor will be on the icon you using last time. Default working time is 60 minutes.

Power off

When system on, touch  again to make the system OFF or the default working time is up, when you hear buzzer sound that means have close all the functions.





NOTE: (the background color of the fly-shuttle switch)

LED show blue color when TEMP below 33° C

LED show orange color when water TEMP between 34° C- 41° C

LED show red color when water TEMP over 41° C

2. Hand shower and head shower switch

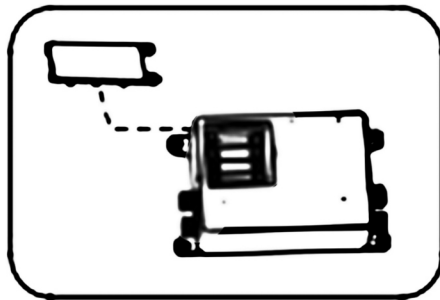
When system on, rotating the fly-shuttle button left or right. the cursor would move to  or  icon, pressing the fly-shuttle button to open hand shower or head shower (hand shower and head shower are inter-locked, you can turn on only one one time), the corresponding operation icon would brighten up on the LCD panel after turning on. The cursor could move to  or  icon, pressing again the fly-shuttle button to close hand shower or head shower, the corresponding function icon would be dark.

Installation of the Control Panel

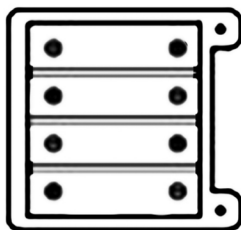
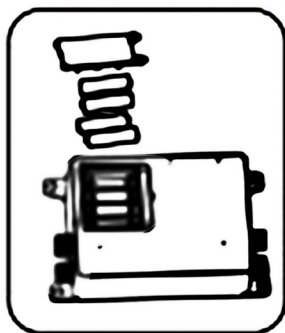
There are two kinds of installation ways shower controller according to the installation site, one way is to recess mount into the wall. Another way is to build into the shower panel.

A. Battery Installation

1. Loose the screws on the battery cover and take it off.

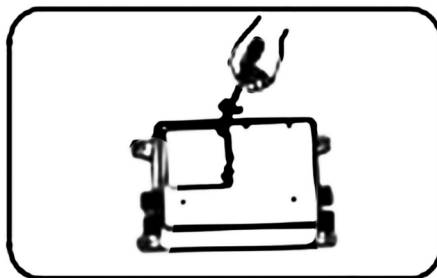


2. Putting 4 pcs rechargeable batteries into the battery slot of host box.



Attention:
When putting the battery into the host box, you need to identify the anode and the cathode.

3. Insert the battery cover into the host box, and lock it with the screws.



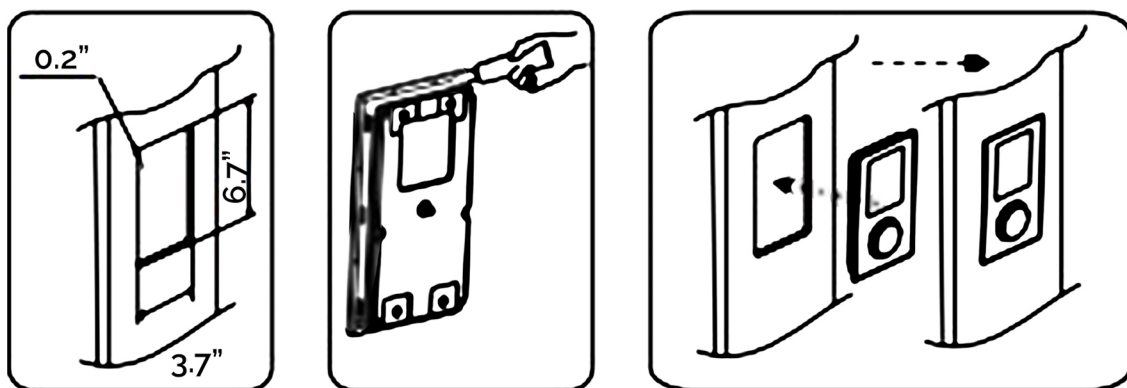
Caution:

- Using rechargeable NI-MH battery [the 5#(AA) and the capacity is more than 1000Mah).
- After electrify, forbid using the normal 5#(AA) battery. Otherwise, would cause the battery explosion.
- When the power cut, you can use the high quality normal 5#(AA) dry battery as the emergency measure. But you must unplug the adapter.
- When you install the host box, please put the battery into it. If the product haven't connected with the power in a long time. Please take out the battery from the host box. This way can avoid affect the battery working life.
- If you want to the battery with a longer working life, you can charge the battery every some months.

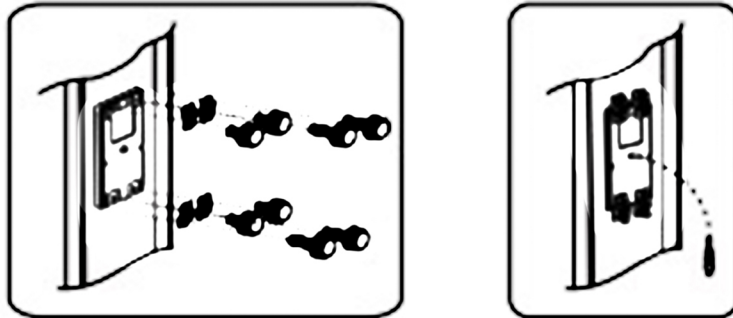
Installation of the control panel

1. Build the control panel into the shower panel

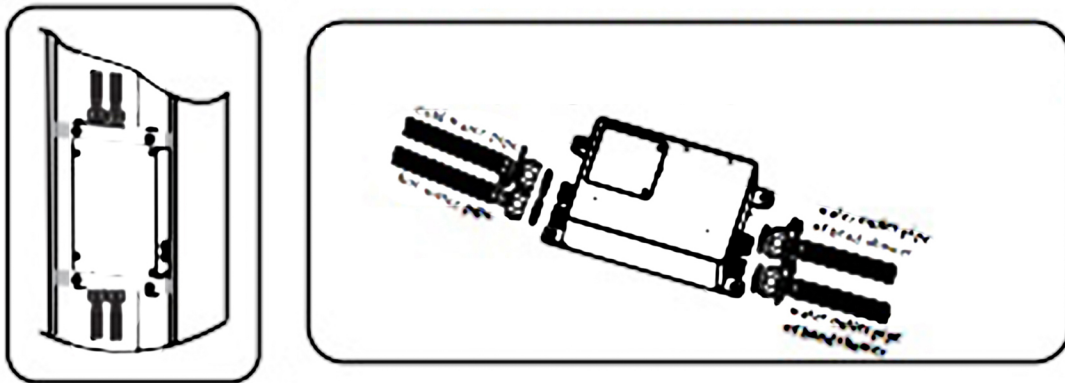
Step 1: Open a hole (6.7" X 3.7") on the shower panel, putting some glass cement around the back of the control panel and fit it on the hole of the shower panel as picture shown.



Step 2: Fasten the mounting bracket onto the back of the control panel by screws.



Step 3: Install the host box on the back of the shower panel, connect the cold water and hot water pipe, hand shower and head shower's pipes.

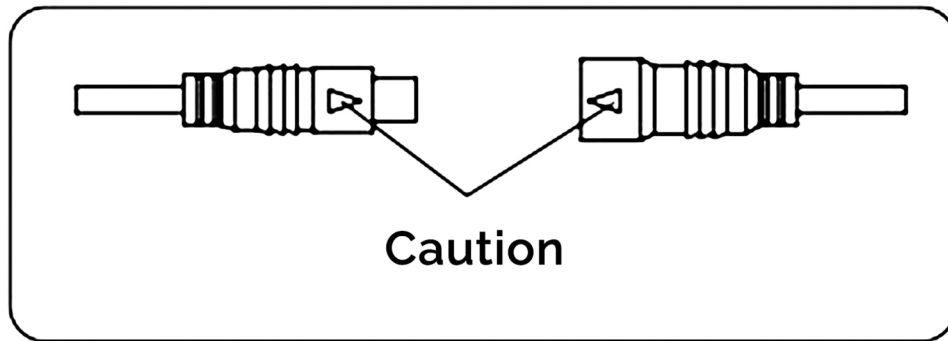


1. Connect the G1/2" hot and cold water inlet pipes to the host box, tighten it and make sure connection is well sealed (as the picture showed).
2. Connect the G 1/2" water inlet pipe of the faucet to the water outlet pipe of the host box, tighten it and make sure connection is well seated (as the picture shown).

Caution:

- When installation, the hot water pipe and the cold water pipe can not mix up. Otherwise, the system can not work.
- When you tighten the connector nut, torque should not exceed 8NM, GB 2.5NM is OK, otherwise, it will damage the connector of the mixing valve and lead to water leaking.

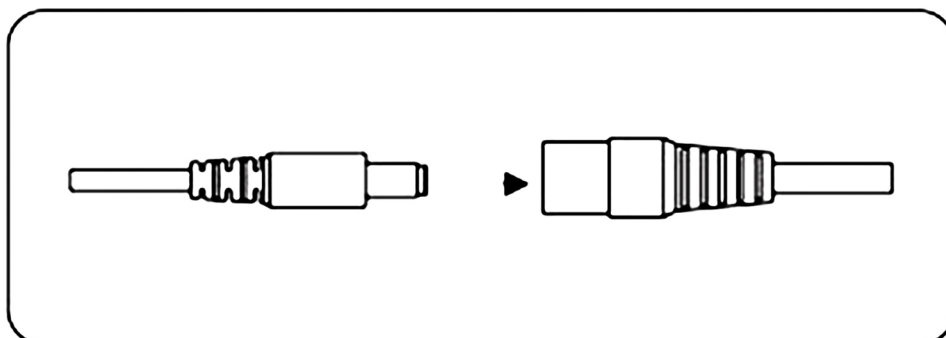
Step 4: Connect the host box control cable with the control cable of shower faucet as arrow mark on picture.



Caution:

When connect the two control cables, must follow the arrow mark which shown in the cable joint. If not, will damage the cable joint.

Step 5: Connect the power supply cable of the host box with the adapter.



1. Recess mounted into wall

According to the wall thickness, you can choose installation method A or B.

Method A: If the wall is thin, the host box and the shower control panel can be installed in different position.

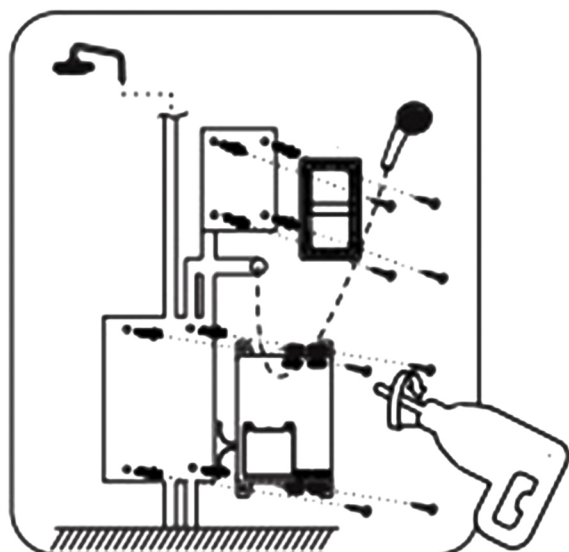
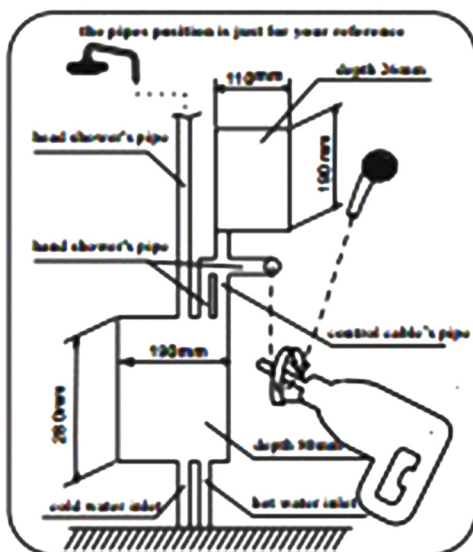
Method B: If the wall is thick, the host box and the shower control panel can be installed in the same position.

Installation step of method A:

Step 1. Open two hole in the wall, and reserve space for the pipes and adapter.

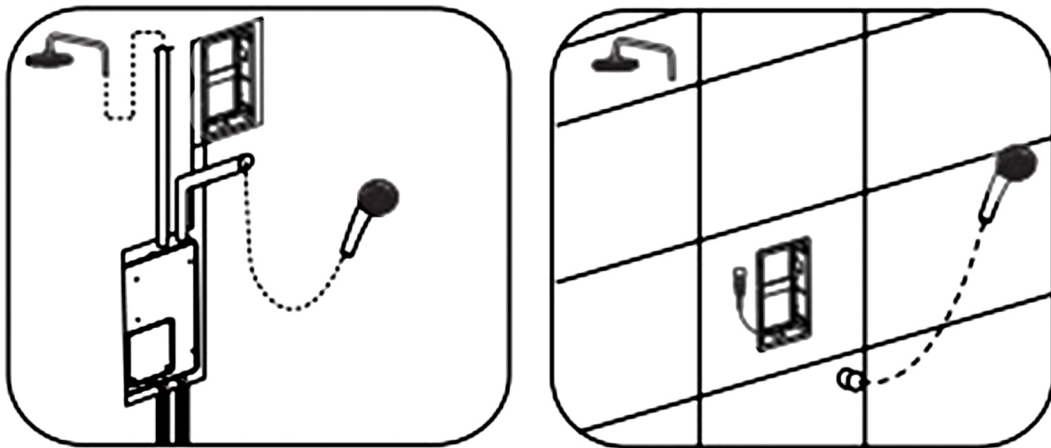
Step 2. Drill four holes by 6mm diameter on the upside hole to install the wall bracket (as the picture) and put the plastic screw into the hole.

Step 3. Drill four holes by 8mm diameter on the downside hole for the host box installation and put the expansion screws into the hole.

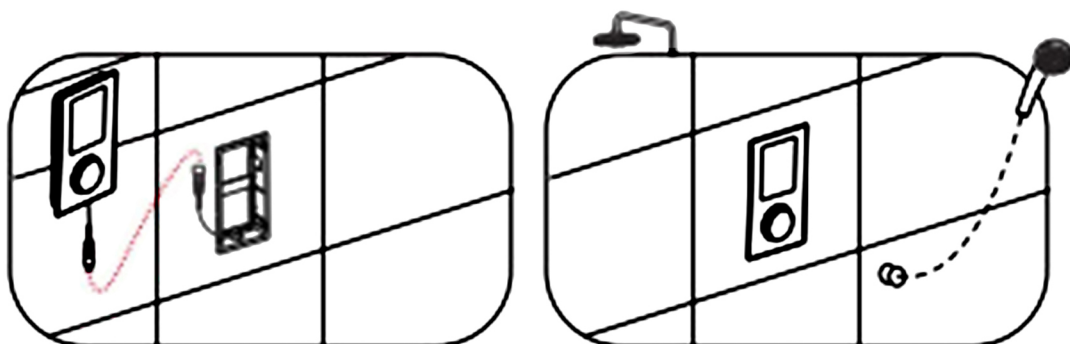


Step 4: Install the wall bracket of control panel and the host box in two holes, according to the pipe's position to set the host box position, adjust the screw of wall bracket to make sure it is concave the wall surface with 0.5-1mm difference.

Step 5: Connect the water pipe and the power supply cable of the host box, get water supply to make sure the pipe no leak. Connect the host box control cable to the control panel hole and fasten it, using the cement to seal the wall and cover by the tiles.



Step 6: Connect the control cable between the host box and the control panel, putting some silicon on the back case of the control panel and put it on the wall bracket.



replacement parts	host box + power supply + control panel
tension	~ 220 V
application	Shower system (embedded)
installation	the type of wall for the digital control panel
adjust the temperature range of the water	29-48 ° C (with cold water mode)
temperature range of water supply	cold water 4-29 30-86 ° C ° C hot water (maximum 100 ° C)
water pressure range	0.05-0.6MPA, more than \$ number \$ number mpa, please install a water pressure release valve.
difference between hot and cold water	the difference of > 6: 1
flow of water (L / min)	4-18L
liquid crystal display (LCD)	LCD
touch the control button	standard
thermostatic + water flow control	standard
water device	standard
battery	standard
on heat protection	standard
valve	\$ number-way valve for hand shower head and shower. 3 way for a more jet body
without power supply	standard